

# AFM Series

## Single Phase Medical Grade Inlet-type EMI Filter



These series range of filters with IEC Inlet are designed to suppress undesirable electrical disturbances in Power Lines. They limit the amplitude of interfering voltages on AC power lines and prevent them from propagating into or out of the filtered equipment.

### FEATURES

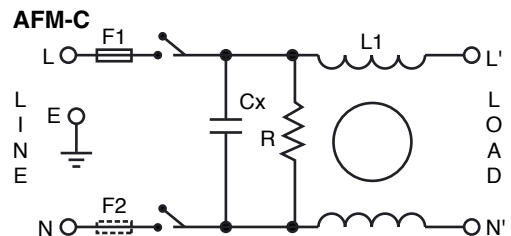
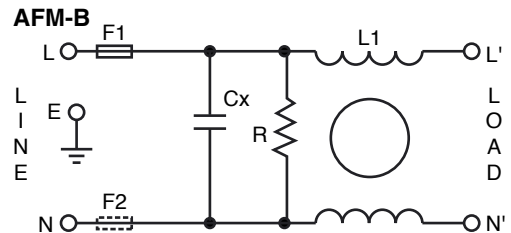
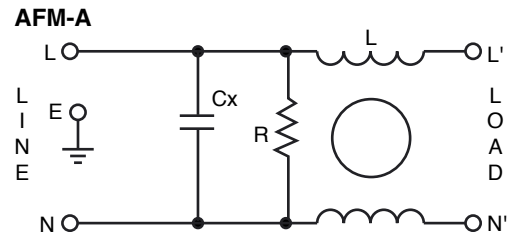
- Rated Current up to 15A
- Low Leakage
- High Conducted attenuation performance
- Excellent performance/size ratio
- Integral IEC Connector
- Single/Double Fuse Option
- Double Pole/Single Throw Switch

### APPLICATIONS

- Medical Equipment
- Diagnostic Equipment
- X ray Machine



### CIRCUIT DIAGRAMS



### CHARACTERISTICS

<b>Max. Cont. Oper. Voltage</b>	250VAC
<b>Operating Frequency</b>	50/60Hz
<b>Current ratings</b>	AFM-A: 1A to 15A @40°C, AFM-B: 1A to 6A @40°C; AFM-C: 1A to 10A @40°C
<b>High Potential test voltage</b>	L to G 2120VDC for 1 min.; L to L 1414VDC for 1 min.
<b>Overload Capability</b>	135% of Rated current for 15 min.
<b>Design</b>	Corresponding to UL 60939-3, CSA 22.2 No.8-13 and IEC 60939
<b>Flammability</b>	Corresponding to UL 94 V-0
<b>Temperature range</b>	-25°C to +85°C
<b>Climatic Category</b>	25/85/21
<b>Enclosure Material</b>	AFM-A and B: Aluminium; AFM-C: CRCA
<b>Termination</b>	Fastons 6.3x0.8

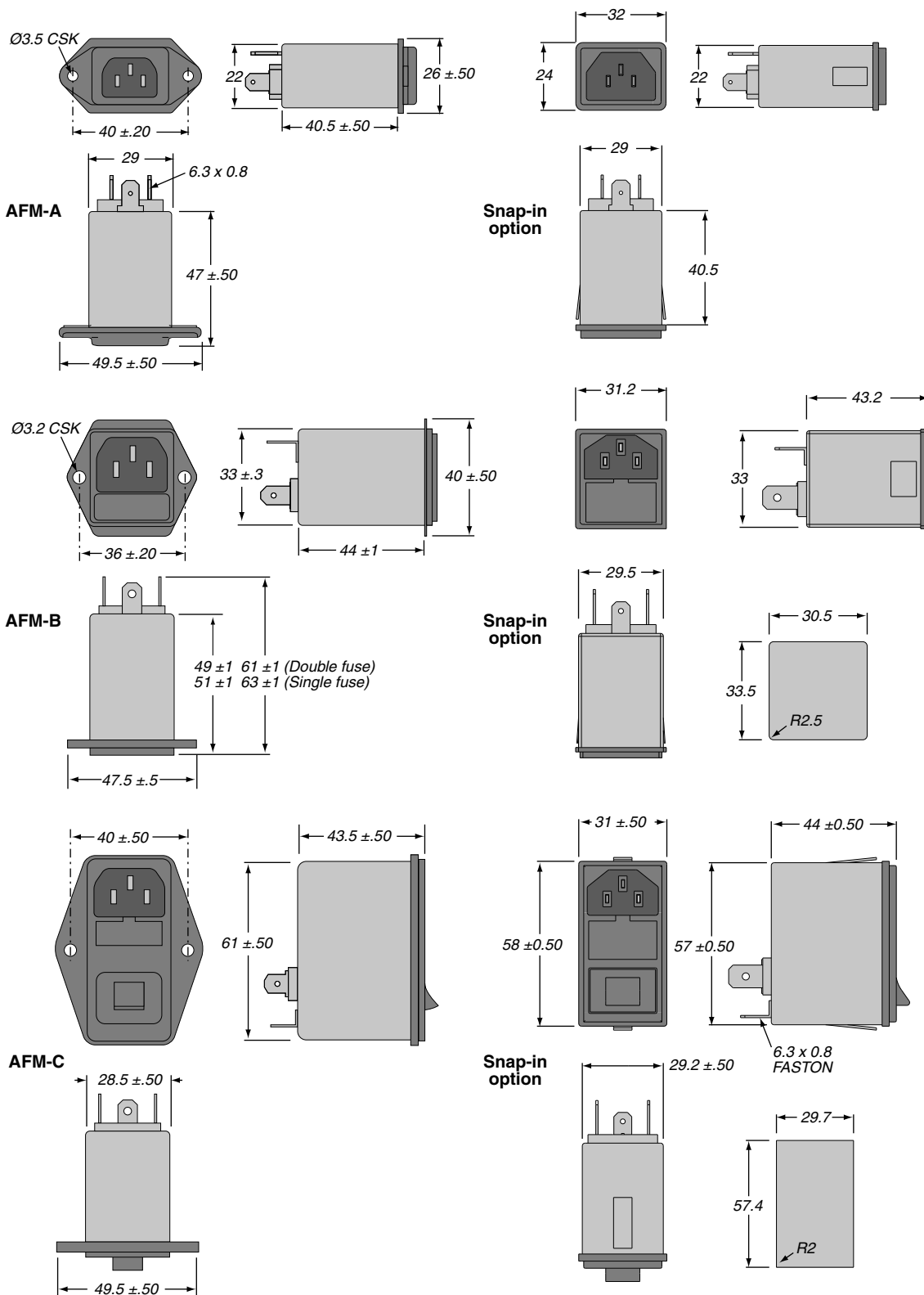
(continued)

# AFM Series

## Single Phase Medical Grade Inlet-type EMI Filter

### DIMENSIONS

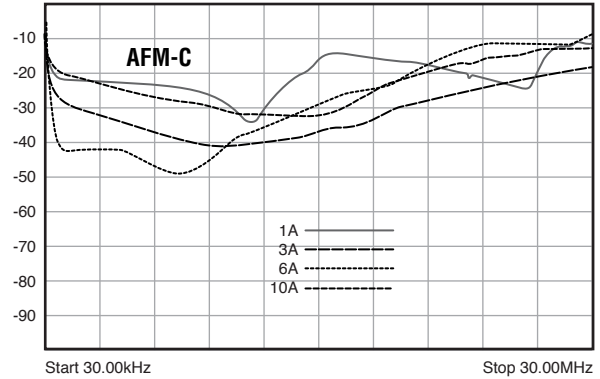
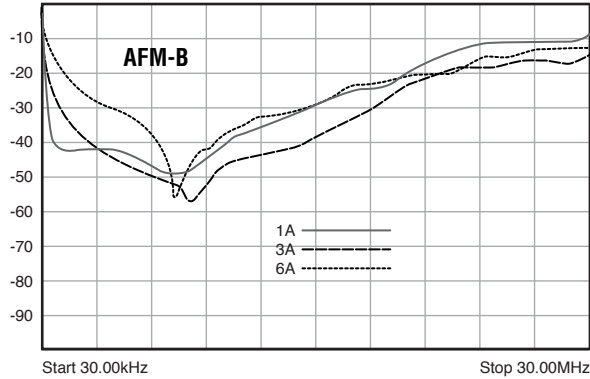
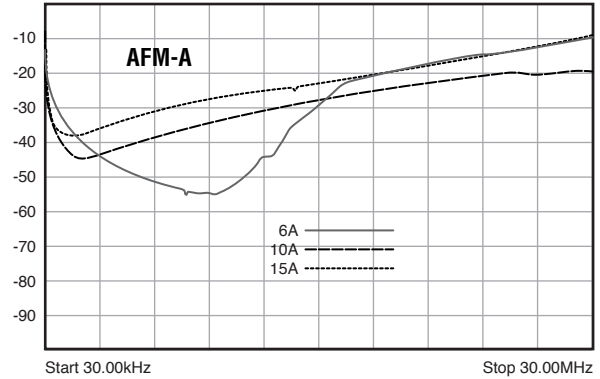
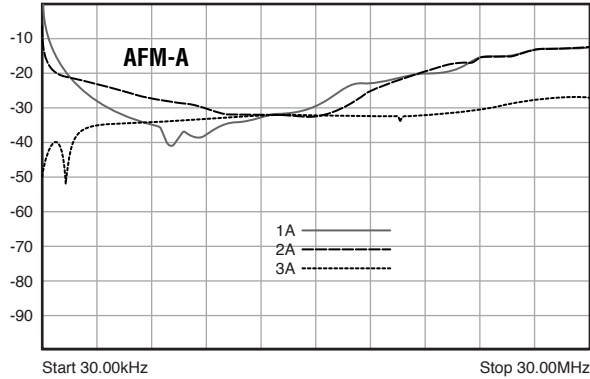
All dimensions in mm; Tolerances according to ISO2768-m



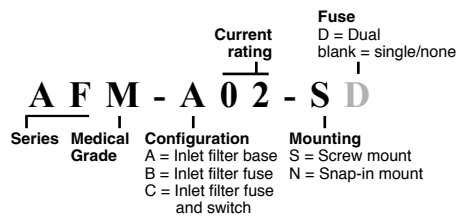
# AFM Series

## Single Phase Medical Grade Inlet-type EMI Filter

### INSERTION LOSS



### ORDERING INFORMATION



Part No.	Rated current	
	@40°C	Weight (g)
AFM-A03S	3A	60
AFM-A06S	6A	60
AFM-A10S	10A	60
AFM-A15S	15A	60
AFM-B01S	1A	60
AFM-B03S	3A	60
AFM-B06S	6A	60
AFM-B01SD	1A	60
AFM-B03SD	3A	60
AFM-B06SD	6A	60
AFM-C01S	1A	120
AFM-C03S	3A	120
AFM-C06S	6A	120
AFM-C10S	10A	120